

Test Report

No. CANEC1808664001

Date: 16 May 2018

Page 1 of 13

SHENZHEN CHEERMO INNOVATIVE ADHESIVE MATERIALS CO.,LTD

KUNSHAN CHEERMO ELECTRONIC MATERIALS CO.,LTD

NO.2 XINFENG ROAD, TONFUYU INDUSTRIAL AREA, FUYONG TOWN, BAOAN DISTRICT, SHENZHEN CITY

NO 165,EAST GANGPU ROAD, ZHANGPU TOWN, KUNSHAN CITY, JIANGSU PROVINCE, CHINA

The following sample(s) was/were submitted and identified on behalf of the clients as :

AL/RR26/KS85W*D/ALJ/CL66/KG85W-B/ALJ/RH75/KS85W

SGS Job No. : CP18-023285 - SZ

Date of Sample Received : 09 May 2018

Testing Period : 09 May 2018 - 15 May 2018

Test Requested : As specified by client, selected parts of the submitted sample(s) for compliance with Consumer Product Safety Improvement Act of 2008, CPSIA:

- Lead in accessible substrate materials;

- Phthalates;

Other test(s) as requested by client.

Test Method : Please refer to next page(s).

Test Results : Please refer to next page(s).

Result Summary :

Test Requested	Conclusion
RoHS Directive (EU) 2015/863 amending Annex II to Directive 2011/65/EU	See Results
European Directive 94/62/EC and its amendments - Total Lead, Cadmium, Mercury and Hexavalent Chromium Content	PASS
US Model Toxics in Packaging Legislation (TPCH: Toxics in Packaging Clearing House) (formerly drafted by CONEG) – Total Lead, Cadmium, Mercury and Hexavalent Chromium content	PASS
EN 71-3:2013+A2:2017-Migration of Certain Elements (Category III: Scrapped-off toy material)	See Results
American Society for Testing and Materials -ASTM F 963-17(Clause 4.3.5) - total Lead in Substrate Materials	See Results
American Society for Testing and Materials-ASTM F 963-17(Clause 4.3.5)-soluble heavy metal in Substrate Materials/paint and similar surface-coating materials	See Results
CPSIA section 101(a)(2) - Lead in accessible substrate materials (including Children's Metal Jewelry)	PASS
CPSIA section 108 - Phthalates	PASS



SGS-CSTC Shanghai Technical Services Co., Ltd.
Guangzhou Branch Testing Center Chemical Laboratory.

Unless otherwise agreed in writing, this document is issued by the Company subject to its General Conditions of Service printed overleaf, available on request or accessible at <http://www.sgs.com/en/Terms-and-Conditions.aspx> and, for electronic format documents, subject to Terms and Conditions for Electronic Documents at <http://www.sgs.com/en/Terms-and-Conditions/Terms-e-Documents.aspx>. Attention is drawn to the limitation of liability, indemnification and jurisdiction issues defined therein. Any holder of this document is advised that information contained hereon reflects the Company's findings at the time of its intervention only and within the limits of Client's instructions, if any. The Company's sole responsibility is to its Client and this document does not exonerate parties to a transaction from exercising all their rights and obligations under the transaction documents. This document cannot be reproduced except in full, without prior written approval of the Company. Any unauthorized alteration, forgery or falsification of the content or appearance of this document is unlawful and offenders may be prosecuted to the fullest extent of the law. Unless otherwise stated the results shown in this test report refer only to the sample(s) tested.

Attention: To check the authenticity of testing /inspection report & certificate, please contact us at telephone: (86-755) 8307 1443, or email: CN_Doccheck@sgs.com

198 Kazhu Road, Sciencetech Park Guangzhou Economic & Technology Development District, Guangzhou, China 510663 t (86-20) 82155555 f (86-20) 82075113 www.sgs.com.cn
中国·广州·经济技术开发区科学城科珠路198号 邮编: 510663 t (86-20) 82155555 f (86-20) 82075113 e sgs.china@sgs.com

Test Report

No. CANEC1808664001

Date: 16 May 2018

Page 2 of 13

Entry 51 & 52 of Regulation (EC) No 552/2009 amending Annex XVII of REACH Regulation (EC) No 1907/2006 (previously restricted under Directive 2005/84/EC)-Phthalate	PASS
---	------

Based on the performed tests on submitted sample(s), the results of Lead, Mercury, Cadmium, Hexavalent chromium, Polybrominated biphenyls (PBBs), Polybrominated diphenyl ethers (PBDEs) and Phthalates such as Bis(2-ethylhexyl) phthalate (DEHP), Butyl benzyl phthalate (BBP), Dibutyl phthalate (DBP), and Diisobutyl phthalate (DIBP) comply with the limits as set by RoHS Directive (EU) 2015/863 amending Annex II to Directive 2011/65/EU.

When tested as specified, Migration of certain elements of the submitted sample(s) do not exceed the limit of the European Standard EN 71-3:2013+A2:2017.

Signed for and on behalf of

SGS-CSTC Standards Technical Services Co., Ltd. Guangzhou Branch



Merry Lv

Approved Signatory



SGS-CSTC Standards Technical Services Co., Ltd.
Guangzhou Branch Testing Center Chemical Laboratory

Unless otherwise agreed in writing, this document is issued by the Company subject to its General Conditions of Service printed overleaf, available on request or accessible at <http://www.sgs.com/en/Terms-and-Conditions.aspx> and, for electronic format documents, subject to Terms and Conditions for Electronic Documents at <http://www.sgs.com/en/Terms-and-Conditions/Terms-e-Documents.aspx>. Attention is drawn to the limitation of liability, indemnification and jurisdiction issues defined therein. Any holder of this document is advised that information contained hereon reflects the Company's findings at the time of its intervention only and within the limits of Client's instructions, if any. The Company's sole responsibility is to its Client and this document does not exonerate parties to a transaction from exercising all their rights and obligations under the transaction documents. This document cannot be reproduced except in full, without prior written approval of the Company. Any unauthorized alteration, forgery or falsification of the content or appearance of this document is unlawful and offenders may be prosecuted to the fullest extent of the law. Unless otherwise stated the results shown in this test report refer only to the sample(s) tested.

Attention: To check the authenticity of testing /inspection report & certificate, please contact us at telephone: (86-755) 8307 1443, or email: CN.Doccheck@sgs.com

198 Kazhu Road, Sciotech Park Guangzhou Economic & Technology Development District, Guangzhou, China 510663 t (86-20) 82155555 f (86-20) 82075113 www.sgs.com.cn
中国·广州·经济技术开发区科学城科珠路198号 邮编: 510663 t (86-20) 82155555 f (86-20) 82075113 e sgs.china@sgs.com

Test Report

No. CANEC1808664001

Date: 16 May 2018

Page 3 of 13

Test Results :

Test Part Description :

Specimen No.	SGS Sample ID	Description
SN1	CAN18-086640.001	White adhesive film

Remarks :

- (1) 1 mg/kg = 0.0001%
- (2) MDL = Method Detection Limit
- (3) ND = Not Detected (< MDL)
- (4) "-" = Not Regulated

RoHS Directive (EU) 2015/863 amending Annex II to Directive 2011/65/EU

Test Method : With reference to IEC 62321-4:2013+A1:2017, IEC62321-5:2013, IEC62321-7-2:2017, IEC 62321-6:2015 and IEC62321-8:2017, analyzed by ICP-OES, UV-Vis and GC-MS.

Test Item(s)	Limit	Unit	MDL	001
Cadmium (Cd)	100	mg/kg	2	ND
Lead (Pb)	1000	mg/kg	2	ND
Mercury (Hg)	1000	mg/kg	2	ND
Hexavalent Chromium (CrVI)	1000	mg/kg	8	ND
Sum of PBBs	1000	mg/kg	-	ND
Monobromobiphenyl	-	mg/kg	5	ND
Dibromobiphenyl	-	mg/kg	5	ND
Tribromobiphenyl	-	mg/kg	5	ND
Tetrabromobiphenyl	-	mg/kg	5	ND
Pentabromobiphenyl	-	mg/kg	5	ND
Hexabromobiphenyl	-	mg/kg	5	ND
Heptabromobiphenyl	-	mg/kg	5	ND
Octabromobiphenyl	-	mg/kg	5	ND
Nonabromobiphenyl	-	mg/kg	5	ND
Decabromobiphenyl	-	mg/kg	5	ND
Sum of PBDEs	1000	mg/kg	-	ND
Monobromodiphenyl ether	-	mg/kg	5	ND
Dibromodiphenyl ether	-	mg/kg	5	ND
Tribromodiphenyl ether	-	mg/kg	5	ND
Tetrabromodiphenyl ether	-	mg/kg	5	ND
Pentabromodiphenyl ether	-	mg/kg	5	ND
Hexabromodiphenyl ether	-	mg/kg	5	ND
Heptabromodiphenyl ether	-	mg/kg	5	ND



SGS-CSTC Service & Technology Co., Ltd.
Guangzhou Branch Testing Center Chemical Laboratory.

Unless otherwise agreed in writing, this document is issued by the Company subject to its General Conditions of Service printed overleaf, available on request or accessible at <http://www.sgs.com/en/Terms-and-Conditions.aspx> and, for electronic format documents, subject to Terms and Conditions for Electronic Documents at <http://www.sgs.com/en/Terms-and-Conditions/Terms-e-Documents.aspx>. Attention is drawn to the limitation of liability, indemnification and jurisdiction issues defined therein. Any holder of this document is advised that information contained hereon reflects the Company's findings at the time of its intervention only and within the limits of Client's instructions, if any. The Company's sole responsibility is to its Client and this document does not exonerate parties to a transaction from exercising all their rights and obligations under the transaction documents. This document cannot be reproduced except in full, without prior written approval of the Company. Any unauthorized alteration, forgery or falsification of the content or appearance of this document is unlawful and offenders may be prosecuted to the fullest extent of the law. Unless otherwise stated the results shown in this test report refer only to the sample(s) tested.

Attention: To check the authenticity of testing /inspection report & certificate, please contact us at telephone: (86-755) 8307 1443, or email: CN.Doccheck@sgs.com

198 Kazhu Road, Sciotech Park Guangzhou Economic & Technology Development District, Guangzhou, China 510663 t (86-20) 82155555 f (86-20) 82075113 www.sgs.com.cn
中国·广州·经济技术开发区科学城科珠路198号 邮编: 510663 t (86-20) 82155555 f (86-20) 82075113 e sgs.china@sgs.com

Test Report

No. CANEC1808664001

Date: 16 May 2018

Page 4 of 13

<u>Test Item(s)</u>	<u>Limit</u>	<u>Unit</u>	<u>MDL</u>	<u>001</u>
Octabromodiphenyl ether	-	mg/kg	5	ND
Nonabromodiphenyl ether	-	mg/kg	5	ND
Decabromodiphenyl ether	-	mg/kg	5	ND
Dibutyl phthalate (DBP)	1000	mg/kg	50	ND
Butyl benzyl phthalate (BBP)	1000	mg/kg	50	ND
Bis (2-ethylhexyl) phthalate (DEHP)	1000	mg/kg	50	ND
Diisobutyl Phthalates (DIBP)	1000	mg/kg	50	ND

Notes :

(1) The maximum permissible limit is quoted from RoHS Directive (EU) 2015/863.

IEC 62321 series is equivalent to EN 62321 series

http://www.cenelec.eu/dyn/www/f?p=104:30:1742232870351101:::FSP_ORG_ID,FSP_LANG_ID:1258637,25

European Directive 94/62/EC and its amendments - Total Lead, Cadmium, Mercury and Hexavalent Chromium Content

Test Method : With reference to GZTC CHEM-TOP-174-01. Analysis of Cadmium, Lead and Mercury was performed by ICP-OES. Analysis of Hexavalent Chromium (Cr(VI)) was performed by UV-Vis

<u>Test Item(s)</u>	<u>Limit</u>	<u>Unit</u>	<u>MDL</u>	<u>001</u>
Cadmium (Cd)	-	mg/kg	5	ND
Lead (Pb)	-	mg/kg	5	ND
Hexavalent Chromium (Cr(VI))	-	mg/kg	8	ND
Mercury (Hg)	-	mg/kg	5	ND
Total (Pb + Cd + Cr VI + Hg)	100	mg/kg	-	ND

US Model Toxics in Packaging Legislation (TPCH: Toxics in Packaging Clearing House) (formerly drafted by CONEG) – Total Lead, Cadmium, Mercury and Hexavalent Chromium content

Test Method : With reference to GZTC CHEM-TOP-174-01. Analysis of Cadmium, Lead and Mercury was performed by ICP-OES. Analysis of Hexavalent Chromium (Cr(VI)) was performed by UV-Vis

<u>Test Item(s)</u>	<u>Limit</u>	<u>Unit</u>	<u>MDL</u>	<u>001</u>
Lead (Pb)	-	mg/kg	5	ND
Hexavalent Chromium (Cr(VI))	-	mg/kg	8	ND
Cadmium (Cd)	-	mg/kg	5	ND
Mercury (Hg)	-	mg/kg	5	ND
Total (Pb + Cd + Cr VI + Hg)	100	mg/kg	-	ND



SGS-CSTC (Shanghai) Technical Services Co., Ltd.
Guangzhou Branch Testing Center Chemical Laboratory.

Unless otherwise agreed in writing, this document is issued by the Company subject to its General Conditions of Service printed overleaf, available on request or accessible at <http://www.sgs.com/en/Terms-and-Conditions.aspx> and, for electronic format documents, subject to Terms and Conditions for Electronic Documents at <http://www.sgs.com/en/Terms-and-Conditions/Terms-e-Documents.aspx>. Attention is drawn to the limitation of liability, indemnification and jurisdiction issues defined therein. Any holder of this document is advised that information contained hereon reflects the Company's findings at the time of its intervention only and within the limits of Client's instructions, if any. The Company's sole responsibility is to its Client and this document does not exonerate parties to a transaction from exercising all their rights and obligations under the transaction documents. This document cannot be reproduced except in full, without prior written approval of the Company. Any unauthorized alteration, forgery or falsification of the content or appearance of this document is unlawful and offenders may be prosecuted to the fullest extent of the law. Unless otherwise stated the results shown in this test report refer only to the sample(s) tested.

Attention: To check the authenticity of testing /inspection report & certificate, please contact us at telephone: (86-755) 8307 1443, or email: CN.Doccheck@sgs.com

198 Kazhu Road, Sciotech Park Guangzhou Economic & Technology Development District, Guangzhou, China 510663 t (86-20) 82155555 f (86-20) 82075113 www.sgs.com.cn
中国·广州·经济技术开发区科学城科珠路198号 邮编: 510663 t (86-20) 82155555 f (86-20) 82075113 e sgs.china@sgs.com

Test Report

No. CANEC1808664001

Date: 16 May 2018

Page 5 of 13

Notes :

- (1) The TPCB legislation has been enacted by California, Connecticut, Florida, Georgia, Illinois, Iowa, Maine, Maryland, Minnesota, Missouri, New Hampshire, New Jersey, New York, Pennsylvania, Rhode Island, Vermont, Virginia, Washington and Wisconsin.

EN 71-3:2013+A2:2017-Migration of Certain Elements (Category III: Scrapped-off toy material)

Test Method : Chromium (VI) was analyzed by IC-UV/LC-ICP-MS/UV-VIS.

Test Item(s)	Limit	Unit	MDL	001
Soluble Aluminum(Al)	70000	mg/kg	50	64
Soluble Arsenic (As)	47	mg/kg	10	ND
Soluble Boron(B)	15000	mg/kg	50	ND
Soluble Barium (Ba)	18750	mg/kg	50	ND
Soluble Cadmium (Cd)	17	mg/kg	5	ND
Soluble Cobalt(Co)	130	mg/kg	10	ND
Soluble Chromium (III) (Cr (III))	460	mg/kg	5	ND
Soluble Copper(Cu)	7700	mg/kg	50	ND
Soluble Mercury (Hg)	94	mg/kg	10	ND
Soluble Manganese(Mn)	15000	mg/kg	50	ND
Soluble Nickel(Ni)	930	mg/kg	10	ND
Soluble Lead (Pb)	160	mg/kg	10	ND
Soluble Antimony (Sb)	560	mg/kg	10	ND
Soluble Selenium (Se)	460	mg/kg	10	ND
Soluble Zinc (Zn)	46000	mg/kg	50	ND
Soluble Strontium(Sr)	56000	mg/kg	50	ND
Soluble Tin(Sn)	180000	mg/kg	4.9	ND
Soluble Organic Tin	12	mg/kg	-	ND
Soluble Chromium (VI) (Cr (VI))	0.2	mg/kg	0.18	ND

Notes :

- 1.Soluble Chromium (III)= Soluble Total Chromium- Soluble Chromium (VI)
2. Confirmation test of soluble chromium (III) & chromium (VI) is not required in case of soluble chromium does not exceed their requirements as specified in EN 71-3:2013+A2:2017.
3. Confirmation test of soluble organic tin is not required in case of soluble tin, after conversion, does not exceed the soluble organic tin requirement as specified in EN 71-3:2013+A2:2017.

American Society for Testing and Materials -ASTM F 963-17(Clause 4.3.5) - total Lead in Substrate Materials

Test Method : With reference to CPSC-CH-E1002-08.3. Analysis was performed by ICP-OES.



SGS-CSTC (Shanghai) Technical Services Co., Ltd.
Guangzhou Branch Testing Center Chemical Laboratory.

Unless otherwise agreed in writing, this document is issued by the Company subject to its General Conditions of Service printed overleaf, available on request or accessible at <http://www.sgs.com/en/Terms-and-Conditions.aspx> and, for electronic format documents, subject to Terms and Conditions for Electronic Documents at <http://www.sgs.com/en/Terms-and-Conditions/Terms-e-Documents.aspx>. Attention is drawn to the limitation of liability, indemnification and jurisdiction issues defined therein. Any holder of this document is advised that information contained hereon reflects the Company's findings at the time of its intervention only and within the limits of Client's instructions, if any. The Company's sole responsibility is to its Client and this document does not exonerate parties to a transaction from exercising all their rights and obligations under the transaction documents. This document cannot be reproduced except in full, without prior written approval of the Company. Any unauthorized alteration, forgery or falsification of the content or appearance of this document is unlawful and offenders may be prosecuted to the fullest extent of the law. Unless otherwise stated the results shown in this test report refer only to the sample(s) tested.

Attention: To check the authenticity of testing /inspection report & certificate, please contact us at telephone: (86-755) 8307 1443, or email: CN.Doccheck@sgs.com

198 Kazhu Road, Sciotech Park Guangzhou Economic & Technology Development District, Guangzhou, China 510663 t (86-20) 82155555 f (86-20) 82075113 www.sgs.com.cn
中国·广州·经济技术开发区科学城科珠路198号 邮编: 510663 t (86-20) 82155555 f (86-20) 82075113 e sgs.china@sgs.com

Test Report

No. CANEC1808664001

Date: 16 May 2018

Page 6 of 13

<u>Test Item(s)</u>	<u>Limit</u>	<u>Unit</u>	<u>MDL</u>	<u>001</u>
Total Lead (Pb)	100	mg/kg	20	ND

American Society for Testing and Materials-ASTM F 963-17(Clause 4.3.5)-soluble heavy metal in Substrate Materials/paint and similar surface-coating materials

Test Method : With reference to ASTM F 963-17(Clause 8.3), analysis was performed by ICP-OES.

<u>Test Item(s)</u>	<u>Limit</u>	<u>Unit</u>	<u>MDL</u>	<u>001</u>
Soluble Lead (Pb)	90	mg/kg	5	ND
Soluble Antimony (Sb)	60	mg/kg	5	ND
Soluble Arsenic (As)	25	mg/kg	2.5	ND
Soluble Barium (Ba)	1000	mg/kg	10	ND
Soluble Cadmium (Cd)	75	mg/kg	5	ND
Soluble Chromium (Cr)	60	mg/kg	5	ND
Soluble Mercury (Hg)	60	mg/kg	5	ND
Soluble Selenium (Se)	500	mg/kg	10	ND

Notes :

(1) Results shown are of the adjusted analytical results

CPSIA section 101(a)(2) - Lead in accessible substrate materials (including Children's Metal Jewelry)

Test Method : CPSC Test Method: CPSC-CH-E1002-08.3`Standard Operation Procedure for Determining Total Lead (Pb) in Non-Metal Children Product`

<u>Test Item(s)</u>	<u>Limit</u>	<u>Unit</u>	<u>MDL</u>	<u>001</u>
Lead (Pb)	0.01	%(w/w)	0.002	ND
Comment				PASS

Notes :

(1)** Limit applies to a children's product manufactured after 14 August 2011 (Public Law 112-28 (HR 2715, 112th Congress) amending CPSIA)

CPSIA section 108 - Phthalates

Test Method : With reference to CPSC-CH-C1001-09.3, analysis was performed by GC-MS



SGS-CSTC Shanghai Technical Services Co., Ltd.
Guangzhou Branch Testing Center Chemical Laboratory.

Unless otherwise agreed in writing, this document is issued by the Company subject to its General Conditions of Service printed overleaf, available on request or accessible at <http://www.sgs.com/en/Terms-and-Conditions.aspx> and, for electronic format documents, subject to Terms and Conditions for Electronic Documents at <http://www.sgs.com/en/Terms-and-Conditions/Terms-e-Document.aspx>. Attention is drawn to the limitation of liability, indemnification and jurisdiction issues defined therein. Any holder of this document is advised that information contained hereon reflects the Company's findings at the time of its intervention only and within the limits of Client's instructions, if any. The Company's sole responsibility is to its Client and this document does not exonerate parties to a transaction from exercising all their rights and obligations under the transaction documents. This document cannot be reproduced except in full, without prior written approval of the Company. Any unauthorized alteration, forgery or falsification of the content or appearance of this document is unlawful and offenders may be prosecuted to the fullest extent of the law. Unless otherwise stated the results shown in this test report refer only to the sample(s) tested.

Attention: To check the authenticity of testing /inspection report & certificate, please contact us at telephone: (86-755) 8307 1443, or email: CN.Doccheck@sgs.com

198 Kazhu Road, Sciotech Park Guangzhou Economic & Technology Development District, Guangzhou, China 510663 t (86-20) 82155555 f (86-20) 82075113 www.sgs.com.cn
中国·广州·经济技术开发区科学城科珠路198号 邮编: 510663 t (86-20) 82155555 f (86-20) 82075113 e sgs.china@sgs.com

Test Report

No. CANEC1808664001

Date: 16 May 2018

Page 7 of 13

Concentration of phthalates in components of toy product

Test Item(s)	CAS NO	Permissible Limit	Unit	MDL	001
Dibutyl Phthalate (DBP)	84-74-2	0.1	%(w/w)	0.005	ND
Benzylbutyl Phthalate (BBP)	85-68-7	0.1	%(w/w)	0.005	ND
Bis(2-ethylhexyl) Phthalate (DEHP)	117-81-7	0.1	%(w/w)	0.005	ND

Comment

PASS

Concentration of phthalates in components of toy that can be placed in the mouth or childcare article

Test Item(s)	CAS NO	Permissible Limit	Unit	MDL	001
Diisononyl Phthalate (DINP)	28553-12-0 / 68515-48-0	0.1	%(w/w)	0.005	ND
Di-n-octyl Phthalate (DNOP)	117-84-0	0.1	%(w/w)	0.005	ND
Diisodecyl Phthalate (DIDP)	26761-40-0 / 68515-49-1	0.1	%(w/w)	0.005	ND

Comment

PASS

Entry 51 & 52 of Regulation (EC) No 552/2009 amending Annex XVII of REACH Regulation (EC) No 1907/2006 (previously restricted under Directive 2005/84/EC)- Phthalate

Test Method : With reference to EN 14372:2004 , analysis was performed by GC/MS.

Test Item(s)	CAS NO.	Limit	Unit	MDL	001
Dibutyl Phthalate (DBP)	84-74-2	-	%(w/w)	0.003	ND
Benzylbutyl Phthalate (BBP)	85-68-7	-	%(w/w)	0.003	ND
Bis(2-ethylhexyl) Phthalate (DEHP)	117-81-7	-	%(w/w)	0.003	ND
Total (DBP+BBP+DEHP)		0.1	%(w/w)	-	ND
Diisononyl Phthalate (DINP)	28553-12-0 / 68515-48-0	-	%(w/w)	0.010	ND
Di-n-octyl Phthalate (DNOP)	117-84-0	-	%(w/w)	0.003	ND
Diisodecyl Phthalate (DIDP)	26761-40-0 / 68515-49-1	-	%(w/w)	0.010	ND



Unless otherwise agreed in writing, this document is issued by the Company subject to its General Conditions of Service printed overleaf, available on request or accessible at <http://www.sgs.com/en/Terms-and-Conditions.aspx> and, for electronic format documents, subject to Terms and Conditions for Electronic Documents at <http://www.sgs.com/en/Terms-and-Conditions/Terms-e-Document.aspx>. Attention is drawn to the limitation of liability, indemnification and jurisdiction issues defined therein. Any holder of this document is advised that information contained hereon reflects the Company's findings at the time of its intervention only and within the limits of Client's instructions, if any. The Company's sole responsibility is to its Client and this document does not exonerate parties to a transaction from exercising all their rights and obligations under the transaction documents. This document cannot be reproduced except in full, without prior written approval of the Company. Any unauthorized alteration, forgery or falsification of the content or appearance of this document is unlawful and offenders may be prosecuted to the fullest extent of the law. Unless otherwise stated the results shown in this test report refer only to the sample(s) tested.

Attention: To check the authenticity of testing /inspection report & certificate, please contact us at telephone: (86-755) 8307 1443, or email: CN.Doccheck@sgs.com

SGS-CSTC Standard Technical Services Co., Ltd.
Guangzhou Branch Testing Center Chemical Laboratory.

198 Kazhu Road, Sciotech Park Guangzhou Economic & Technology Development District, Guangzhou, China 510663 t (86-20) 82155555 f (86-20) 82075113 www.sgsgroup.com.cn
中国·广州·经济技术开发区科学城科珠路198号 邮编: 510663 t (86-20) 82155555 f (86-20) 82075113 e sgs.china@sgs.com

Test Report

No. CANEC1808664001

Date: 16 May 2018

Page 8 of 13

Test Item(s)	CAS NO.	Limit	Unit	MDL	001
Total (DINP+DNOP+DIDP)		0.1	%(w/w)	-	ND
Comment					PASS

Notes :

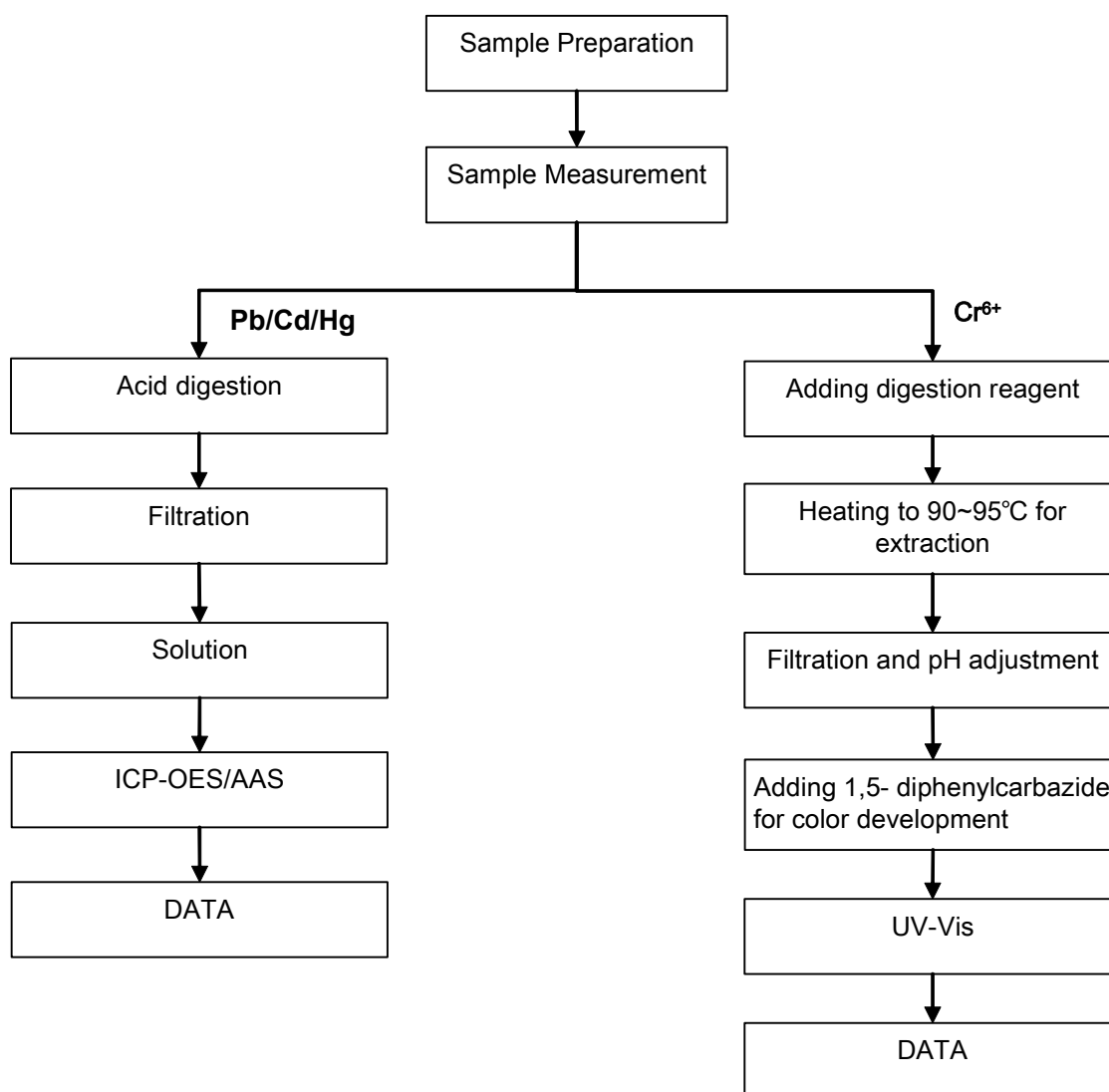
- (1) DBP,BBP,DEHP Reference information: Entry 51 of Regulation (EC) No 552/2009 amending Annex XVII of REACH Regulation (EC) No 1907/2006 (previously restricted under Directive 2005/84/EC):
- i) Shall not be used as substances or in mixtures, in concentrations greater than 0.1 % by weight of the plasticised material, in toys and childcare articles.
 - ii) Toys and childcare articles containing these phthalates in a concentration greater than 0.1 % by weight of the plasticised material shall not be placed on the market.
- Please refer to Regulation (EC) No 552/2009 to get more detail information
- (2) DINP, DNOP, DIDP Reference information: Entry 52 of Regulation (EC) No 552/2009 amending Annex XVII of REACH Regulation (EC) No 1907/2006 (previously restricted under Directive 2005/84/EC).
- i) Shall not be used as substances or in mixtures, in concentrations greater than 0.1 % by weight of the plasticised material, in toys and childcare articles which can be placed in the mouth by children.
 - ii) Such toys and childcare articles containing these phthalates in a concentration greater than 0.1 % by weight of the plasticised material shall not be placed on the market.
- Please refer to Regulation (EC) No 552/2009 to get more detail information



ATTACHMENTS

Pb/Cd/Hg/Cr⁶⁺ Testing Flow Chart

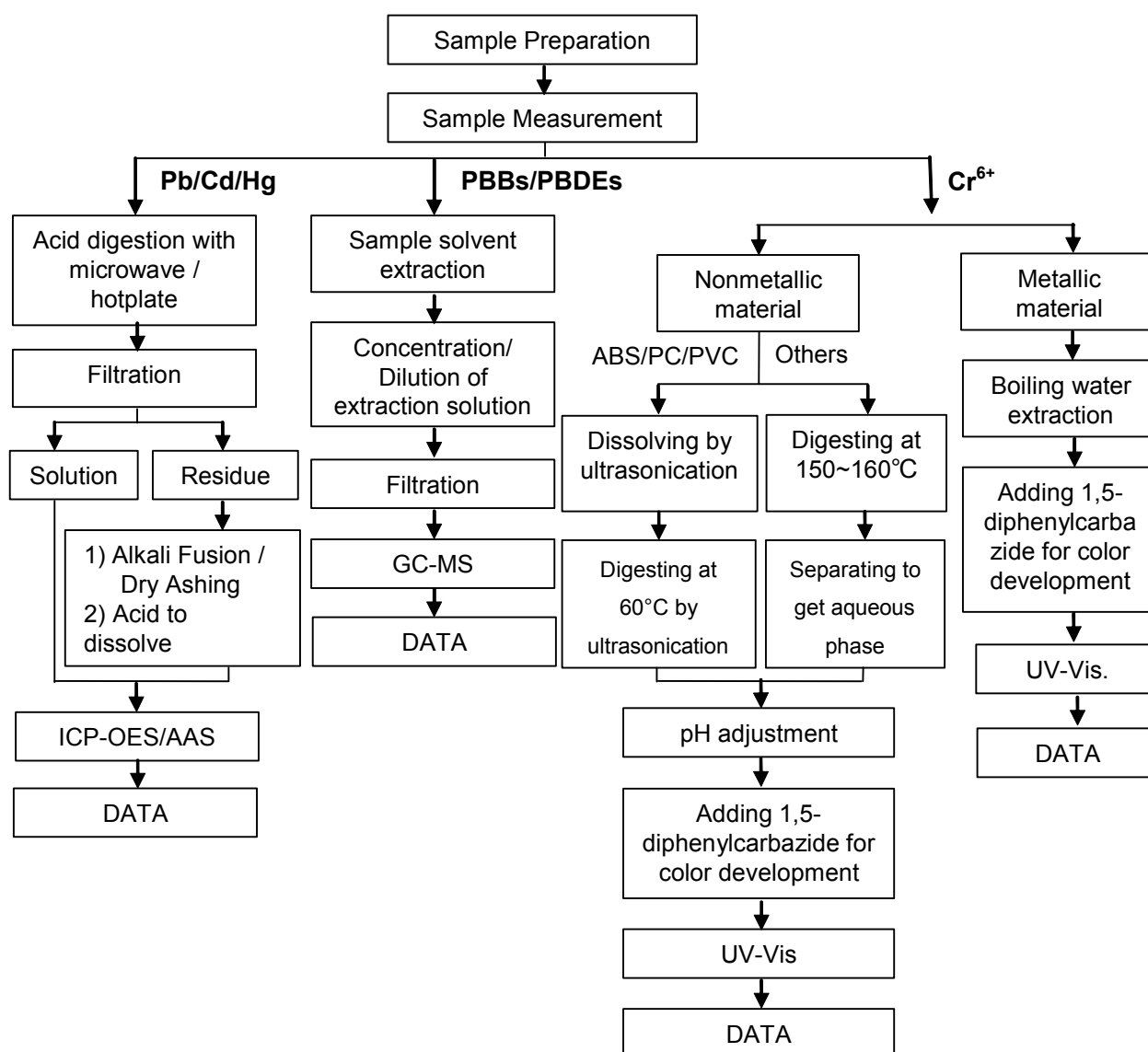
- 1) Name of the person who made testing: Edith Zhang
- 2) Name of the person in charge of testing: Bella Wang



ATTACHMENTS

Pb/Cd/Hg/Cr⁶⁺/PBBs/PBDEs Testing Flow Chart

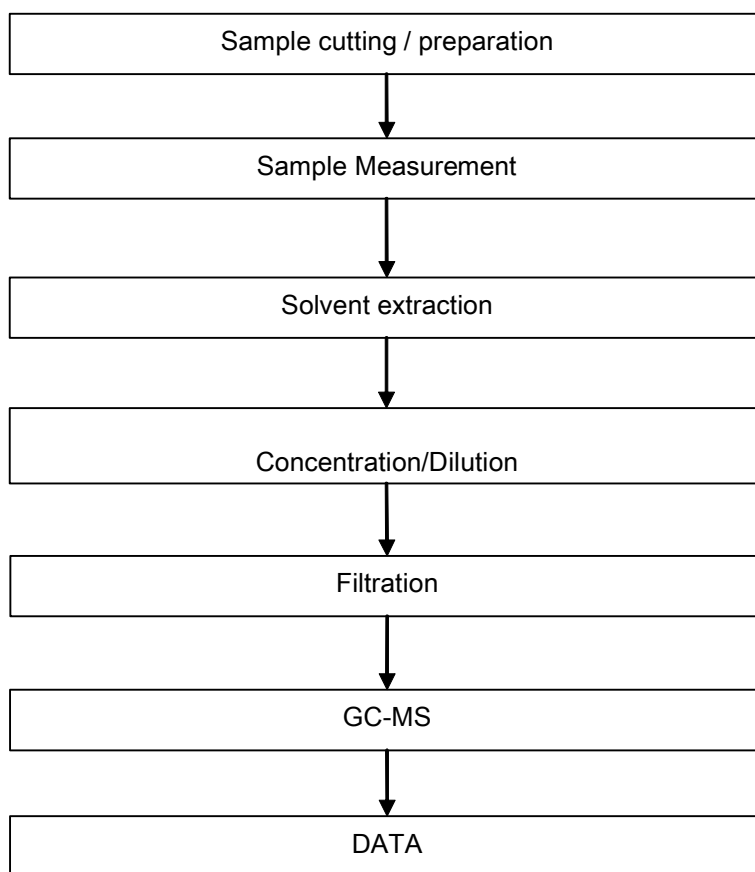
- 1) Name of the person who made testing: Edith Zhang / Sunny Hu
- 2) Name of the person in charge of testing: Bella Wang / Qiong Liu
- 3) These samples were dissolved totally by pre-conditioning method according to below flow chart.
(Cr⁶⁺ and PBBs/PBDEs test method excluded).



ATTACHMENTS

Phthalates Testing Flow Chart

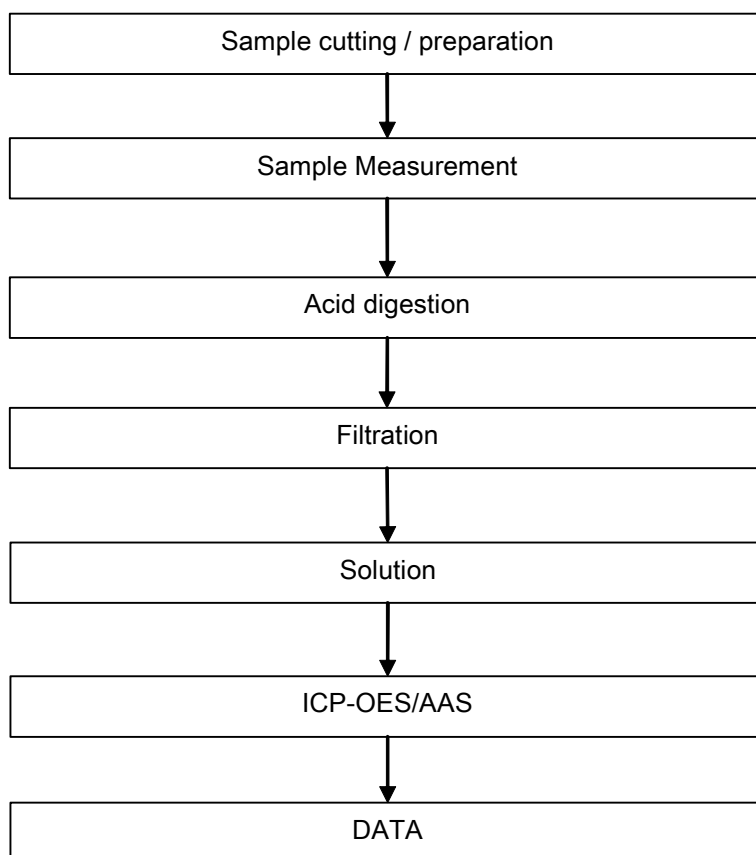
- 1) Name of the person who made testing: Sunny Hu
- 2) Name of the person in charge of testing: Qiong Liu



ATTACHMENTS

Elementary Testing Flow Chart

- 1) Name of the person who made testing: Edith Zhang
- 2) Name of the person in charge of testing: Bella Wang



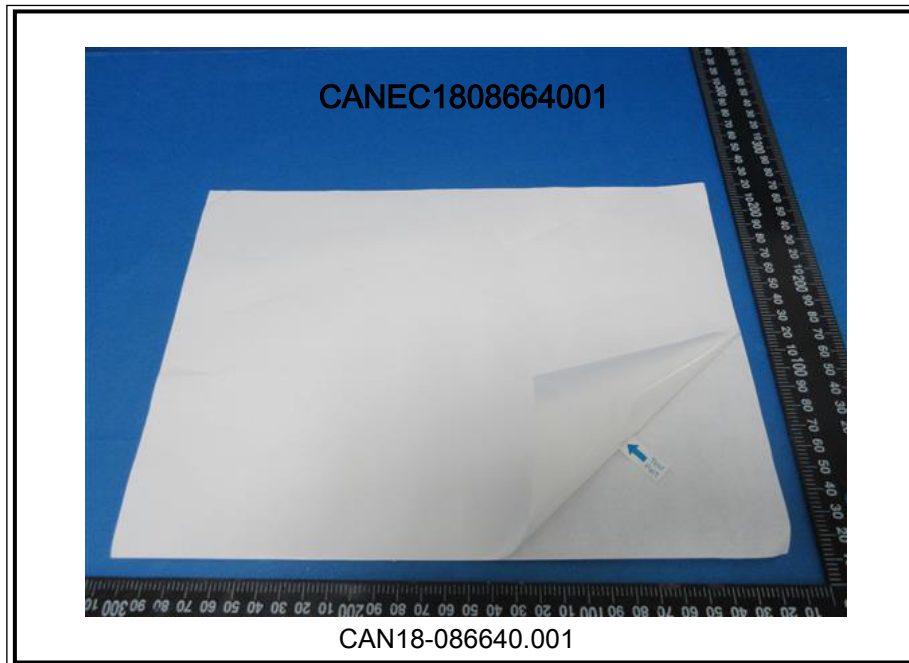
Test Report

No. CANEC1808664001

Date: 16 May 2018

Page 13 of 13

Sample photo:



SGS authenticate the photo on original report only

*** End of Report ***

